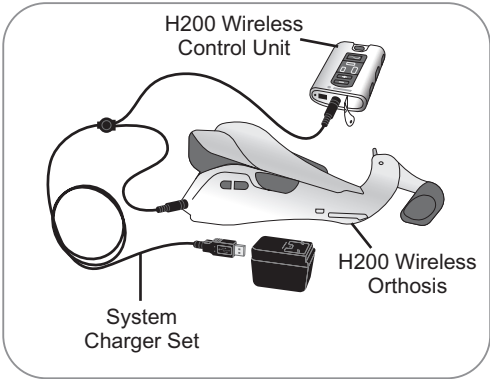


Charging the H200 Wireless System

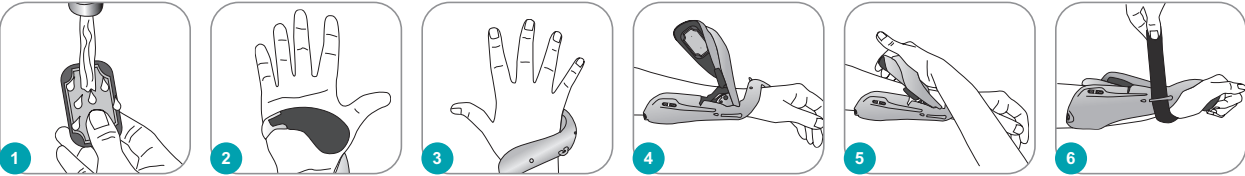
Connect the System Charger Set to the H200 Wireless Orthosis and the H200 Wireless Control Unit simultaneously. Charge the H200 Wireless System daily.



Control Unit Charging Displays		
	Flashes Yellow	Low Battery
	Rotating Green Circle	Charging
	Horizontal Green Line	Fully Charged
Orthosis Charging Displays		
	Status Light Flashes Yellow	Low Battery
	Status Light Flashes Yellow and Green	Charging
	Status Light Steady Green	Fully Charged

Putting on the H200 Wireless Orthosis

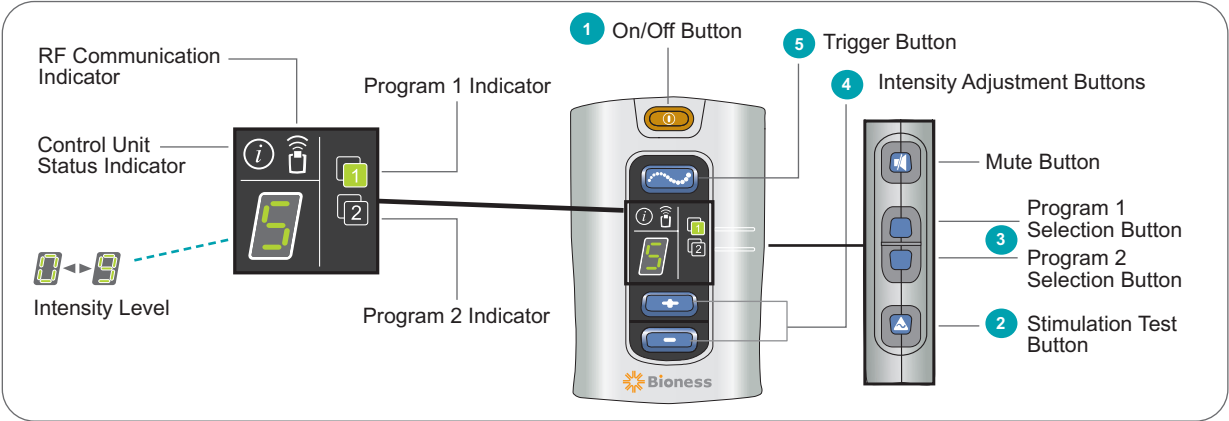
- 1
- Wet and attach the cloth electrodes.
- 2
- Position the Orthosis on a stable surface, and put your hand into the spiral end. The Thenar (with attached electrode) should rest at the base of your thumb.
- 3
- Position the wrist bridge comfortably on the back of your wrist.
- 4
- Place your forearm in the Orthosis flexor support.
- 5
- Close the extensor wing.
- 6
- Fasten the wrist strap, if appropriate.



H200 Wireless Orthosis Displays

System On Status Light Flashes Green	Stimulation On Stim Light Flashes Yellow	Stimulation Paused Stim Light Steady Yellow	Faulty Electrode Contact Status Light Flashes Red	Hardware/Software Error; Charging Error Status Light Steady Red

Operating the H200 Wireless System



- 1 Turn on the system.** Press the on/off button.
- 2 Test the position of the Orthosis.** Press and hold the stimulation test button once to test the extensor muscles. Release the button and press and hold again to test the flexor muscles. Repeat as needed.
- 3 Select Program 1 or Program 2.** Press the Program 1 or Program 2 selection button on the side of the Control Unit. The selected program indicator will be GREEN: 1 or 2.
- 4 If necessary, adjust the stimulation intensity level.** Press the plus or minus button to increase/decrease stimulation intensity in the Orthosis.
- 5 Start a program.** Press the trigger button on the Control Unit or the trigger button on the Orthosis to turn on stimulation. **To pause/resume a program**, press the trigger button on the Control Unit or the trigger button on the Orthosis.
Note: Neuroprosthesis Programs cannot be paused. Pressing the trigger button when stimulation is on initiates the next phase of the program. **To turn off stimulation**, press the on/off button.

H200 Wireless Control Unit Displays

	On/Off Button Flashes Green	System is On
	Trigger Button Flashes Yellow Rapidly	Stimulation is On
	Trigger Button is a Steady Yellow	Stimulation is Paused
	Program 1 Indicator is Green	Program 1 Selected
	Program 2 Indicator is Green	Program 2 Selected
	Control Unit Status Indicator is a Steady Red	Control Unit Malfunction: Charging Error; Registration Error; Software Error
	RF Communication Indicator Flashes Red	RF Communication Error

Rx Only (US only)

For a complete list of all contraindications, warnings, adverse reactions, precautions, and care instructions please review the User's Guide.